



Everything, Everywhere, All at Once: How Iowa is Transforming their ECE Sector with Technology

Presented by **STATE OF IOWA DEPARTMENT OF**
Health AND Human
SERVICES

Phoenix, Arizona | October 2-4, 2023

STATE OF IOWA DEPARTMENT OF

Health ^{AND} Human

SERVICES

Iowa's Shared Services Initiative

Julie Allison, Child Care Bureau Chief

Tami Foley, Policy Program manager

Amanda Winslow, Early Childhood : Early Childhood Project Manager

Governor's Task Force

- Governor Executive Order- March 10, 2021
- 100 days
- Diverse stakeholder input
- Four working groups
- Town Hall meetings
- Final recommendations and report issued November 2021
- Comprehensive Strategies to address child care shortage and barriers to work

Shared Services Task Force Focus

- Develop a shared services model that will allow child care providers to access statewide, web-based support on various business operations.
- Develop a central online hub for parents to quickly and easily find information regarding child care facilities, openings, and enrollment

Shared Services Implementation Science Framework

- Exploration
- Installation
- Initial Implementation
- Full implementation

Exploration

- Governor Task Force
- Lead team development (ECI and DHS staff)
- Opportunities Exchange Technical Assistance
- Shared Services Conference
- Peer to peer learning opportunities
- Co-design Team

Co-design Team

- 23 member team of stakeholders in the child care industry (11 of which were child care businesses)
- Virtual meetings monthly from February – July, 2022
- Goal: to develop an implementation plan for shared services
- Advised on:
 - Creation of a centralized Alliance and Hubs
 - Resources to support child care providers to reduce business overhead costs by creating efficiencies and economies of scale

Co-design Team

- Ensure that the selected Child Care Management System software vendor(s) understand the needs and dreams of our child care community and respond accordingly.
- Develop a menu of service options for child care programs to access as members of the Alliance.
- Create inclusive opportunities for providers to check our thinking and decision making.
- Ensure that providers maintain autonomy and control of their businesses while getting the support they need for financial viability and efficiency.

Installation

- Release RFP and award for Financial Management Consultant (RFP released December 2021; contract began April 2022 with two consultants as a pilot in CCR&R Region I [22 counties]; services offered statewide August 2022 with now 13 consultants)
- Release and award Child Care Management RFP (RFP released May 2022; contracts began October 2022)
- Release and award Alliance Hub RFP (RFP released August 2022; contracts began January 2023)
- Intergovernmental Agreement with State University, ISU to develop Operational Data Store (ODS) (agreement for this work began September 2022)
- Build data bridge (API) from State Child Care Subsidy to CCMS vendor brightwheel and Playground (work began November 2022 and in production February 2023)

Installation: FMCs

- Train financial consultants for work with providers/alignment with CCMS vendors
- Providers sign up/paired with financial consultant.
- Financial management consultants use email, virtual and face-to-face support
- Shared Services “updates” and feedback loops
- Regional Shared Services Hubs coordinate with FMCs for business coaching

Installation: Technology Grants

- Providers that work with an FMC and use one of the state-selected CCMSs are eligible for a technology grant
- Initially providers could apply for up to \$1,000 for technology needs
- Adaptive implementation fueled increase in technology grants
- FMCs will also encourage providers to secure local funding (ECI, grants, business/economic organizations) to supplement funding for technology needs

Installation: CCMS

- Two vendors- Playground and brightwheel
- Thirty-minute weekly check-in meetings with each CCMS vendor.
- Vendors agreed to data bridges (APIs) with state subsidy
- Vendors agreed to create + share data dashboards on provider use patterns
- Technology grants – SFY’23, 283 providers received a grant and a total of \$350,430 was expended
- Subscription fees paid by state – originally for 1-year, now until September 20, 2024

CCMS Data Bridge

- Application Programming Interface (API) between the CCMS and the Iowa Child Care Assistance Portal, KinderTrack (KT).
- HHS data to track attendance and pay providers that serve subsidized children can now come directly from the provider CCMS.
- Providers can verify + reconcile HHS payment directly in their CCMS.
- Data bridge with ODS planned going forward (to share myriad data)

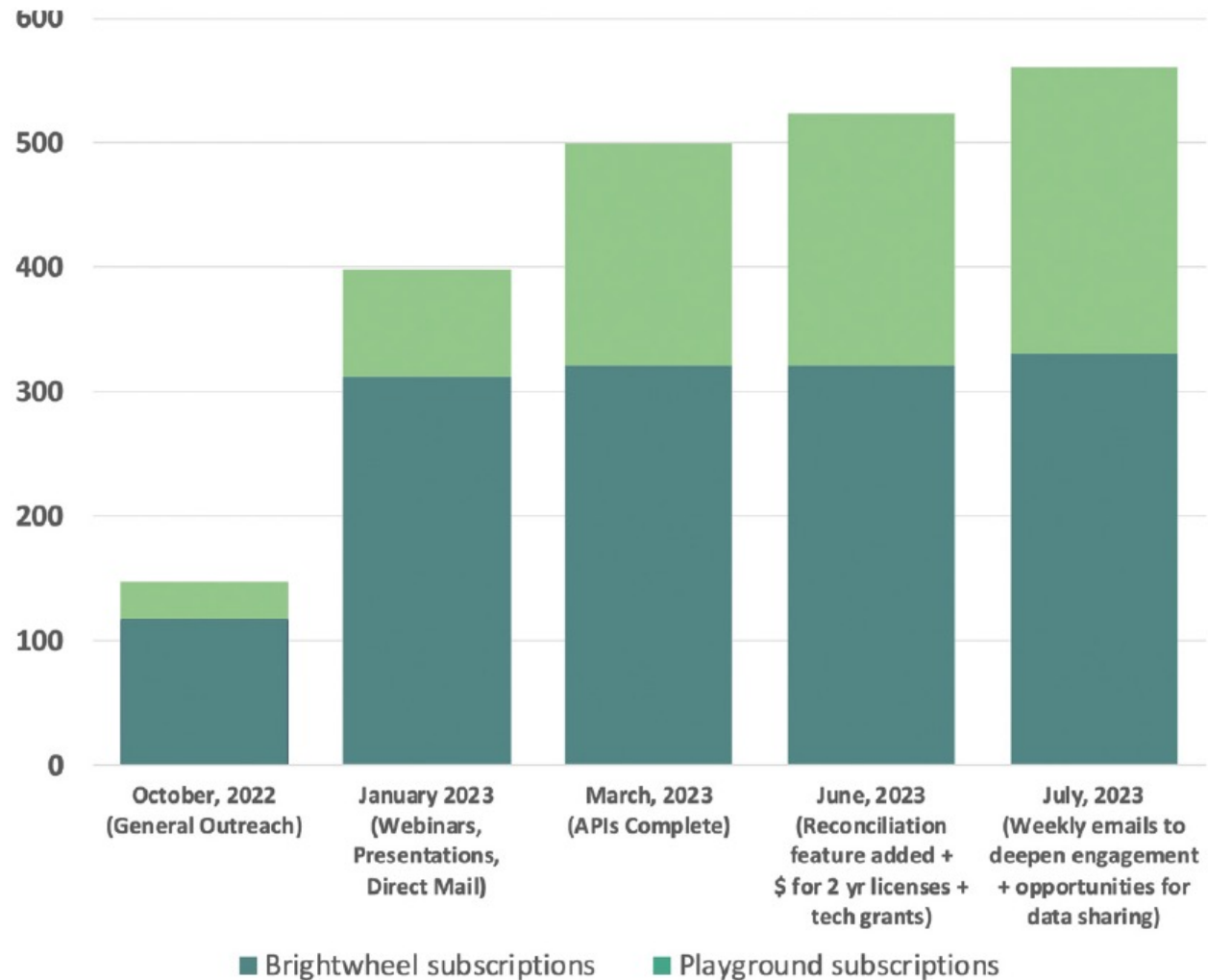


Provider Participation in CCMS

< 9 months from launch (August 2023):

- 560 providers participating
- 11% of licensed centers
- 8% of registered homes

...and growing



Financial Management Consultants (FMC)

- Work with providers (center owners/directors and child development home providers) to identify and implement strategies to strengthen fiscal sustainability and support high-quality programming
- Support programs in monitoring Iron Triangle metrics – full enrollment, full fee collection, and cost-per-child calculations, using CCMS software
- Help providers to implement business practices, support efficient operations, budgeting, fee collection and financial reporting

Provider Recruitment for FMC Services

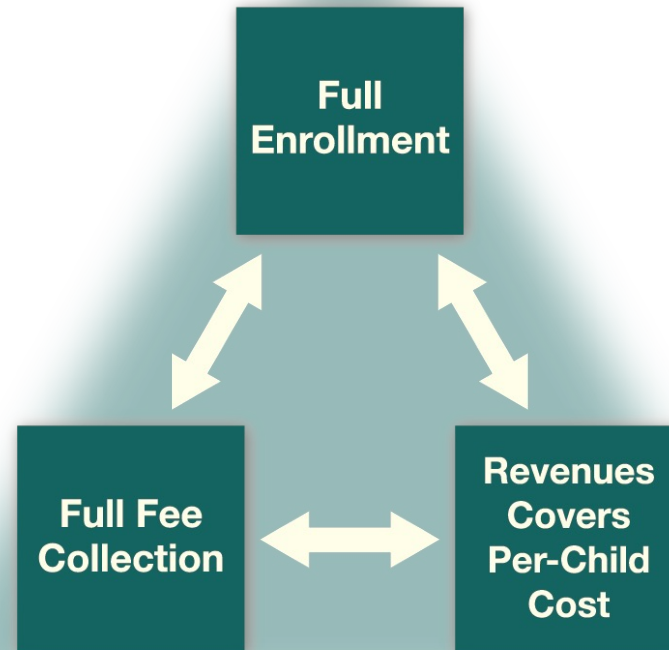
Eligible providers include:

- Registered child development homes (or providers in the process of becoming a child development home)
- Licensed child care centers (or businesses/organizations in the process of becoming a licensed child care center)
- Providers currently using one of the state-selected CCMS software products
- Providers interested in using one of the state-selected CCMS software products

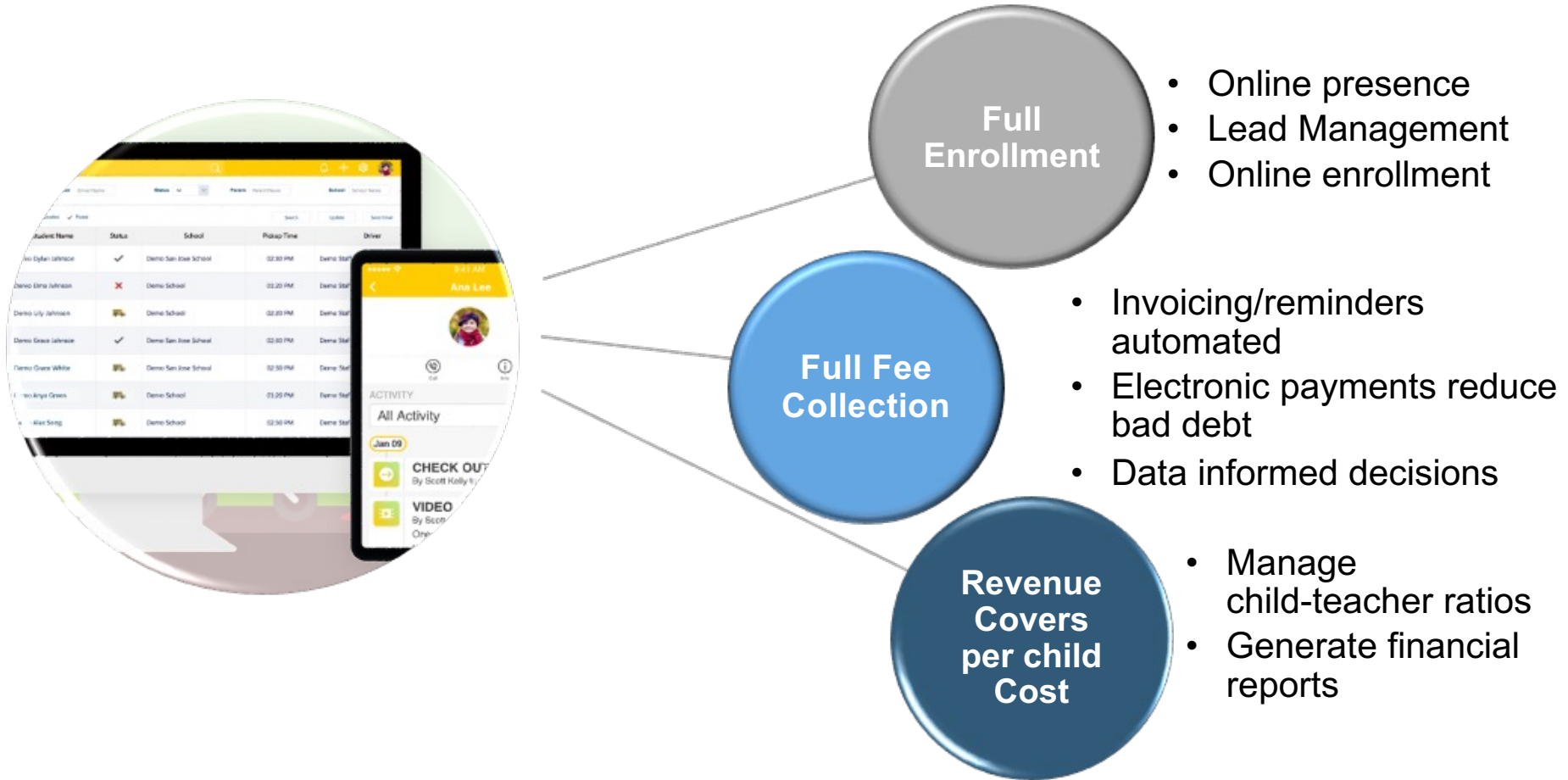
What Works:

Track and benchmark the most powerful ECE business metrics

The Iron Triangle of ECE Finance



CCMS and The Iron Triangle



Timely Data Matters!

Data driven decisions that impact sustainability:

- Enrollment (must stay full)
- Revenue collections – from parents and government
- Costs (per child, by classroom)

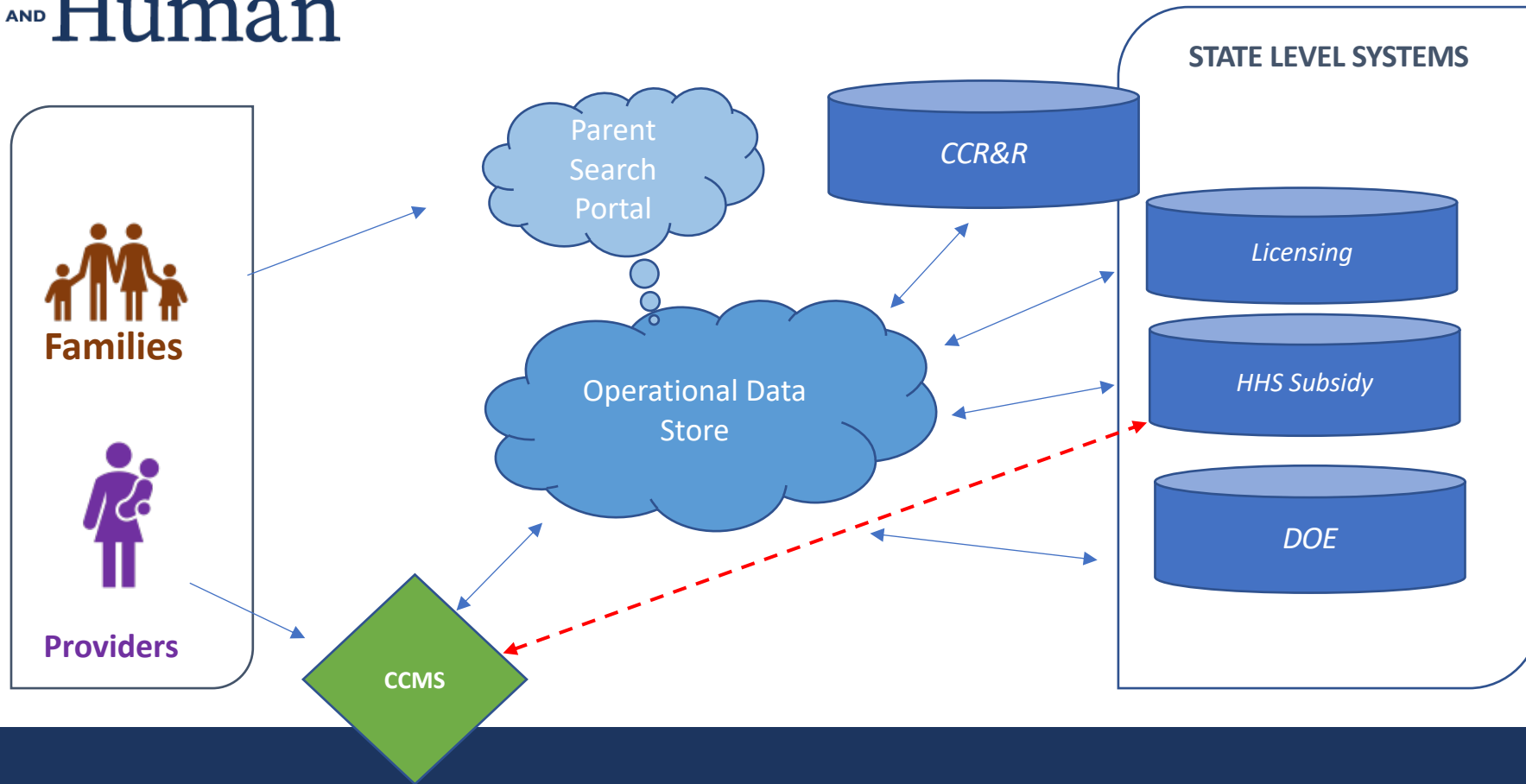
Data required for daily operations or reporting include:

- Attendance (children and employees)
- Meals served
- Quality compliance measures (licensing, QRIS, PD, etc.)

Initial Implementation

- All cyclinders running August 2023. Many moving parts to monitor
- Built in processes from the beginning essential for sustaining
- Creation of logic model and continuous monitoring of data sets developed
- Operational Data Store (ODS) currently being worked on

STATE OF IOWA DEPARTMENT OF
Health AND **Human**
SERVICES

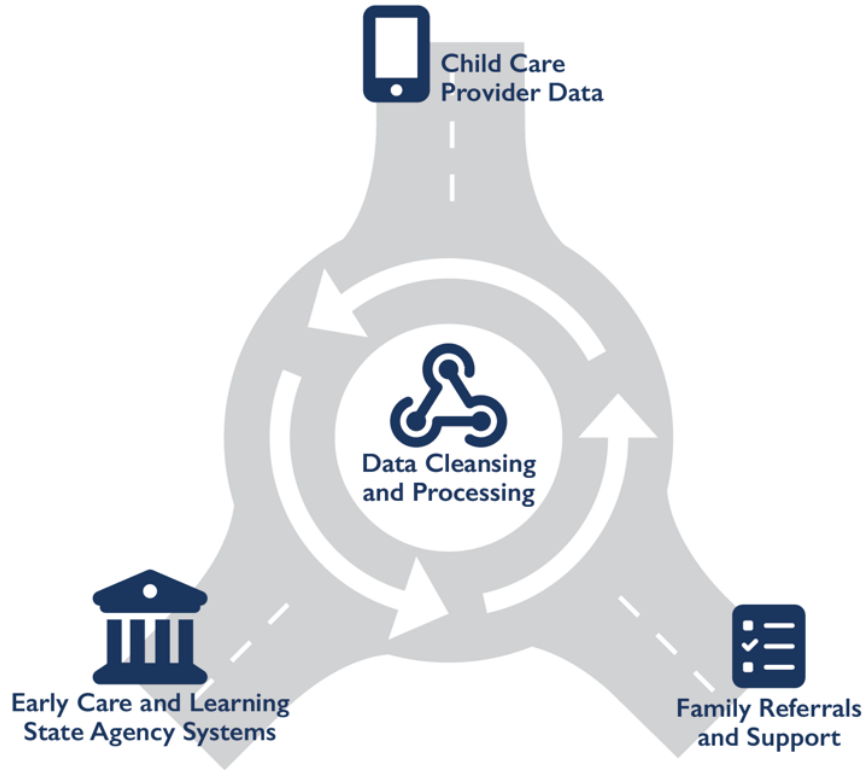


Operational Data Store (ODS)

- Iowa HHS is working with Resultant and Iowa State University on the design, implementation, and roll out of the ODS.
 - The ODS is hosted using cloud-based Microsoft Azure services, which is owned by Iowa State University.
- Cross-agency team guides planning and development of the ODS
- Process is supported by Resultant, an Indianapolis-based data analytics, technology, and management consulting firm

What is an ODS?

An ODS is a **secure, centralized data exchange** that moves specific data in and out of multiple sources to provide comprehensive data that will help drive decision-making.



Why does Iowa need an ODS?

Iowa needs real-time information about the availability of child care by child age categories to support families and empower data driven decision-making.

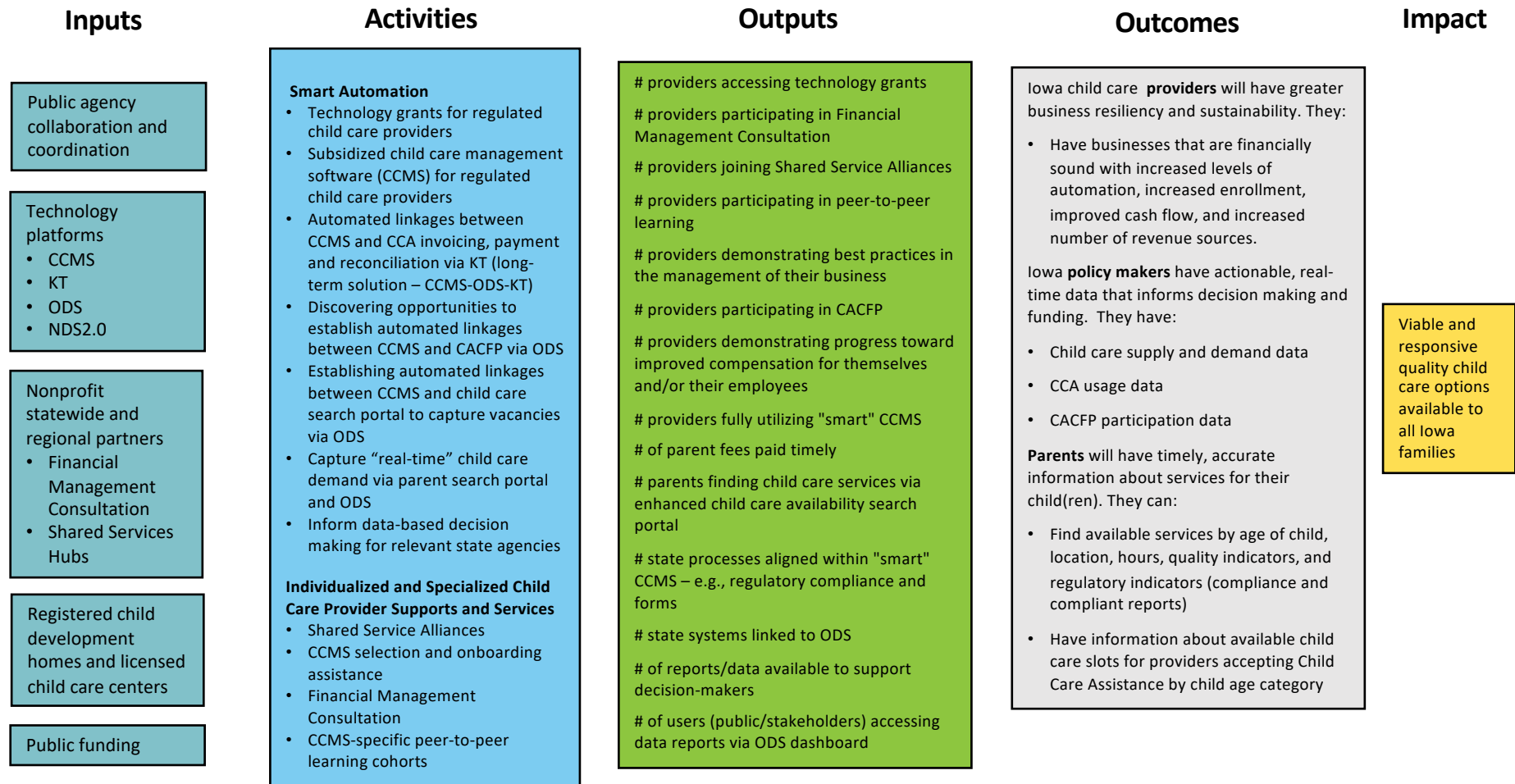
How will an ODS Impact Iowa's Early Childhood Ecosystem?

- **Families** will be able to:
 - Find child care appropriate for their needs and circumstances.
 - Enter the workforce, retain their jobs, or pursue further education
- **Providers** will be able to:
 - Share accurate count of vacancies and decrease the amount of time it takes to fill slots
 - Spend less time doing manual updating of capacity information.
- **Iowa** will be able to:
 - Make better data driven decisions on issues related to child care supply and demand
 - Maximize the number of children in care across Iowa

Full Implementation

- Full implementation will take between two and four years
- Key performance measures/outputs to gauge progress have been established
- Sustainability plan is in affect
- Anticipate July 1, 2025 date to have a full understanding of overall impact for Shared Services project

Shared Services Project Logic Model



Iowa Child Care

“Success is a Project that is Always under Construction” – Pat Summit

Questions



Opportunities
Exchange

**Change
NOW!**



For more information, contact:



Opportunities
Exchange

www.oppex.org

Helping organizations thrive
CIVITAS
STRATEGIES

www.civstrat.com

Phoenix, Arizona | October 2-4, 2023